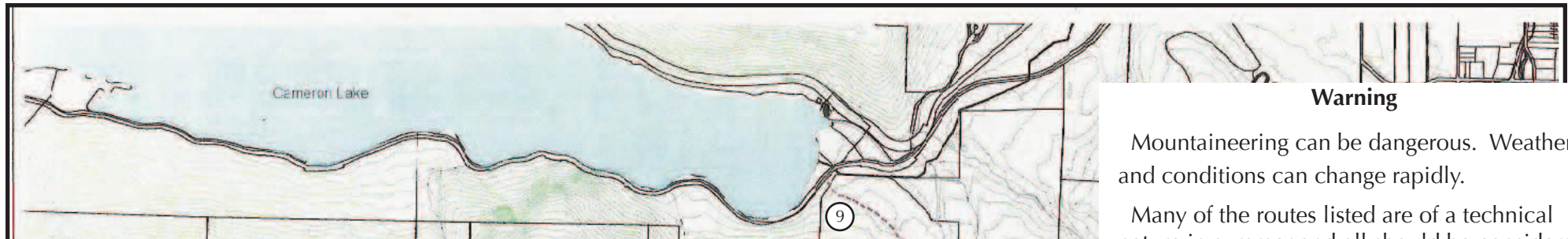


# Mount Arrowsmith



Funding provided by the Mountain Equipment Co-op Environment Fund.



### Road Access

#### WEST ASPECT

Hwy 4, (Alberni Hwy)  
Cameron Lake  
Alberni Summit  
Loon Main / Cameron Main / Pass Main  
*Rough logging roads*

#### EAST ASPECT

Island Hwy 19  
N.W. Bay Division / Englishman Main  
*Rough logging roads*

Backroads are subject to temporary closure due to active logging or fire risk.

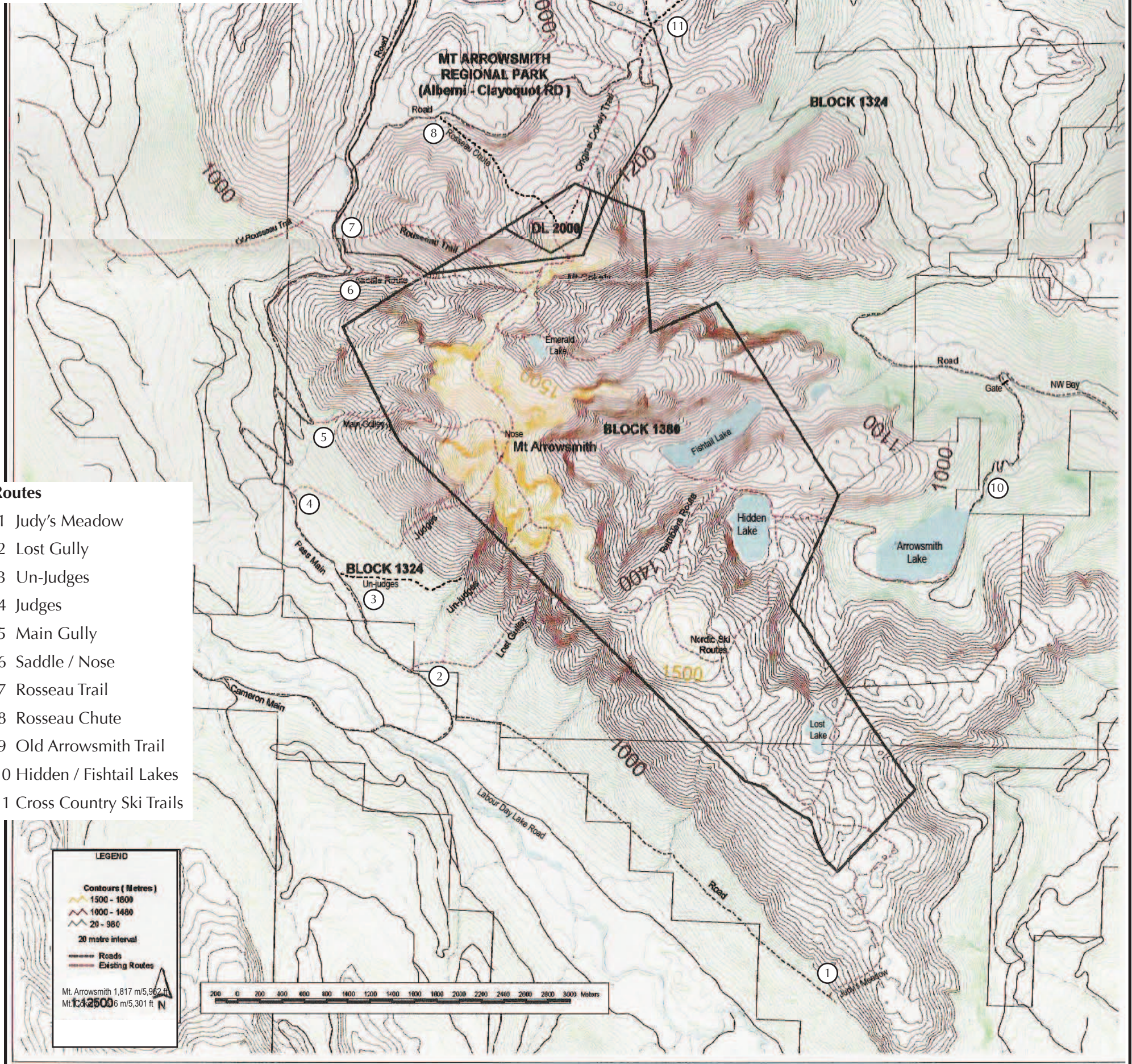
### Warning

Mountaineering can be dangerous. Weather and conditions can change rapidly.

Many of the routes listed are of a technical nature in summer and all should be considered technical in winter.

Hikers, climbers, snowshoers and skiers should be well equipped and have the knowledge and experience to travel in the backcountry or be introduced by competent people.

For an introduction to hiking on Mt. Arrowsmith, see the District 69 Recreation Department, or contact one of the local mountaineering clubs.



### Routes

- 1 Judy's Meadow
- 2 Lost Gully
- 3 Un-Judges
- 4 Judges
- 5 Main Gully
- 6 Saddle / Nose
- 7 Rosseau Trail
- 8 Rosseau Chute
- 9 Old Arrowsmith Trail
- 10 Hidden / Fishtail Lakes
- 11 Cross Country Ski Trails

Please pass this brochure along to another interested party, or return it.  
Printed on REINCARNATION paper - 50% PCW, 100% recycled, PCF (Processed > Chlorine Free).